

Technical data

Couch ergometer	ergoselect 1200 P
Couch width	50 cm
Couch adjustment (incline and tilt)	0 - 45 ° each, continuous, motor driven
Motor control	via control unit with membrane keyboard, 3 positions programmable
Seat height adjustment	continuous, for patients from 120 cm to 210 cm (motor driven)
Patient weight (max.)	140 kg
Drive unit	
Brake system	microprocessor controlled eddy current brake
Load	6 - 999 Watt, speed independent
Accuracy	according to DIN VDE 0750-238
Speed range	30 - 130 rpm/min
Control unit	
Display / patient display	load, rpm, speed, time, blood pressure, heart rate (LCD) / rpm (LED)
Graphic display (load, heart rate)	○
Keyboard	membrane keyboard
Exercise protocols	
User programmable	10
Fixed incremental protocols (WHO, Hollmann, etc.)	5
Manual load adjustment	●
Options	
Automatic blood pressure measurement	○
Leg rests (plug-in type), arm rests (stainless steel), infusion holder	○
Detachable or extended control unit	○
Interface	
Digital (RS-232, USB) / analog / remote start	● / ○ / ○
Miscellaneous	
Dimensions, max. (L x W x H)	approx. 240 cm x 90 cm x 180 cm / space required (max.) approx. 260 cm x 120 cm
Weight	140 kg
Power	230 V (225 VA max.) / 115 V (225 VA max.)

● Standard                      ○ Option



ergoselect 1200

Dynamic stress echocardiography



ergoline GmbH  
Lindenstrasse 5  
D-72475 Bitz  
Germany  
Tel.: +49-(0)-7431 - 9894 - 0  
Fax: +49-(0)-7431 - 9894 - 128  
email: info@ergoline.com  
internet: www.ergoline.com

Development and production of all ergoline products are subject to a certified quality management system according to DIN EN ISO 13485:2003.  
All products are CE-marked and fulfill the requirements of the Medical Device Directive 93/42/EEC.  
  
Some of the illustrations in this brochure show options which must be purchased separately.  
The information provided is based on data valid at the date of printing.  
Subject to modifications.

Distributore

INFOMEDICAL SRL  
Via G. Puccini, 48 - 90144 Palermo Italy  
Tel. +39 091 6814699 Fax: +39 091 6834937  
✉ info@ismad.it 🌐 www.ismad.it





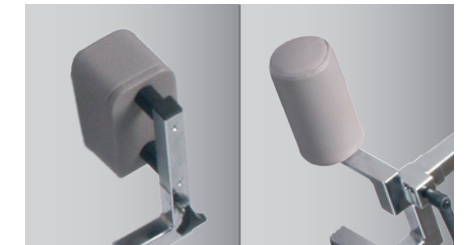
Detachable control unit



Padded drop section for ultrasound examinations



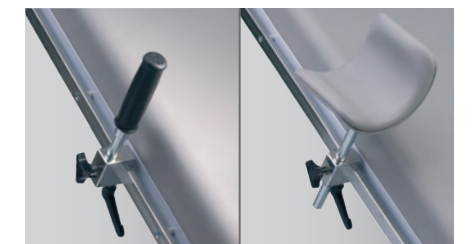
Patient display showing speed



Adjustable, padded hip and shoulder supports



Memory control unit (motor control)



Standardized rails to attach accessories



Motor adjustment for "incline" and "tilt"



Pedal shoes with Velcro ties

## ergoselect 1200 EL

Things only make sense when they are in the right position – in the case of dynamic stress echocardiography this means it is absolutely essential to flexibly position the patient in lateral decubitus.

The functional versatility of the ergoselect 1200 EL is optimally matched to these special requirements, offering sophisticated and advanced technology that set the standards in this field of diagnostics.

### designed for patient comfort

A convenient motor control unit allows exact positioning of the patient. The couch surface can be set to any angle between 0° and 45° – similarly, the bed can be tilted in the same range for the left-lateral decubitus position.

The saddle is continuously adjustable so that the position of the upper body and legs with respect to the pedals is always optimal.

A drop-down, imaging cut-out provides good access to the area to be examined by ultrasound. The special ergometer can also be equipped with removable leg rests on both sides and thus turns into a full-fledged couch for intermediate examinations or the ideal exercise device for cardiac cath lab examinations.

### practice oriented

You can use the ergometer for convenient stand-alone operation with programmable exercise test and training protocols or you connect it to a variety of electrocardiographs or PC-based ECG systems.

To meet the needs of different stress test labs and offices, the control unit may be detached from the ergometer and positioned anywhere in the room.

The system can be upgraded with interference-free, automatic blood pressure measurement, a microprocessor-controlled function providing precise measuring values – even at high loads.

### competent

Patient safety is given top priority: wide footboards make it easy for patients to mount the ergometer, adjustable padded rests for the head, upper body and pelvis give patients support in any position and the specially developed pedal shoes reliably prevent them from slipping off the pedals.

The rugged mechanical construction guarantees outstanding safety and trouble-free operation, even when the ergometer is permanently in use and has to withstand high loads. All ergoline ergometers are produced with only high quality components and, of course, satisfy all applicable standards and requirements for medical grade crank ergometers.